



PONANT Sisterships

L'Austral, Le Boréal, Le Lyrial, Le Soléal





Go beyond *green*

PONANT's ships are not only among the newest, most elegant, and most comfortable small vessels in the world today, they are also the most eco-friendly, having obtained the international "Clean Ships" (Bureau Veritas) certification for innovative green equipment. We are able to offer environmentally sound tourism in some of the world's most unspoiled regions utilizing our state-of-the-art systems and processes:

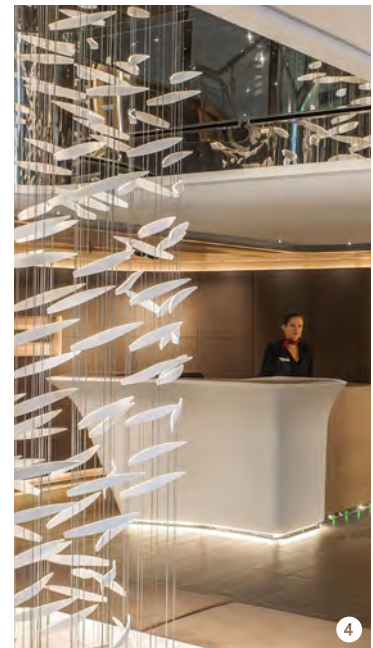
- A silent electric propulsion system cuts carbon emissions by 40%
- A sophisticated GPS system, called Dynamic Position, allows our ships to hover in a fixed location without anchor
- Conserve, filter, treat, and recycle all water used
- Treat wastewater with advanced filtration systems
- Sort, compact, and store all waste on board for recycling ashore
- Reduce electrical power by up to 90% with CFR and LED lighting
- Maintain a respectful distance from marine animals and ocean floor via advanced sonar 3-D imagery

Luxury small ships

These four elegant Sisterships, with up to 130 staterooms and suites, perpetuate our philosophy: small capacity yachts perfect for fostering camaraderie, a unique atmosphere, and a subtle combination of luxury, privacy, and well-being. Designed in France and built in Italy, each ship has its own color palette and motif, but all share in an elegantly understated aesthetic and European sensibility and craftsmanship. The staterooms and suites feature panoramic sea views, and 95% have a balcony. Guests' comfort is the special responsibility of the impeccably trained staff, whose discreet yet attentive service has become legendary among discriminating travelers. Life aboard is relaxed and refined, capturing the best of the French art of living well, and an air of quiet sophistication enhances the unique experience of feeling one is aboard a private yacht.



The Sisterships series symbolizes PONANT's desire to build the ideal cruise ship. **Yachts on a human scale**, *L'Austral*, *Le Boréal*, *Le Lyrial*, and *Le Soléal* can gain access to isolated places and ports reserved for small vessels. With just 130 staterooms and suites, they are perfect for fostering camaraderie amongst like-minded, well-intentioned travelers. **Explore the world** with constantly renewed curiosity.



1. Spa, *Le Soléal*
2. Restaurant, *Le Soléal*
3. The swimming pool on deck 6, *L'Austral*
4. The lobby, *Le Soléal*
5. The library, *Le Soléal*



Public Areas

Reception

- Reception/concierge desk, excursions desk, ship's administrative services, sales office, boutique

Lounges

Main Lounge

- Inside capacity: 110
- Outside capacity: 30
- Afternoon tea, live music, dance floor, and cocktail bar
- Access to the outside terrace

Panoramic Lounge

- Library, internet desk, cocktail bar, live entertainment on select evenings
- Direct access to the panoramic terrace

Restaurants

Gastronomic Restaurant

- Capacity: 268
- Elegant main dining room for breakfast, lunch, and dinner serving French and international cuisine, wine cellar

Grill Restaurant

- Inside capacity: 150
- Outside capacity: 60
- Casual dining venue for breakfast, buffet lunch, and themed dinner

Open-air Bar (Pool deck)

- Seating: 50
- Overlooking the pool deck

Recreation/Relaxation

Fitness & Beauty Corner

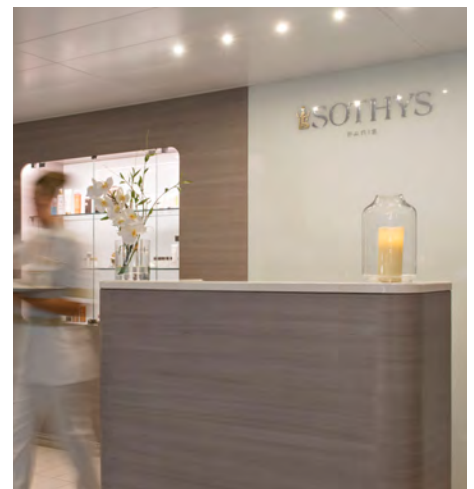
- Fitness room: Kinesis equipment, running machines, bicycles
- Sothys™ Beauty Corner: Hairdresser, massage rooms (2), Balneo room, hammam, relaxation room

Theater

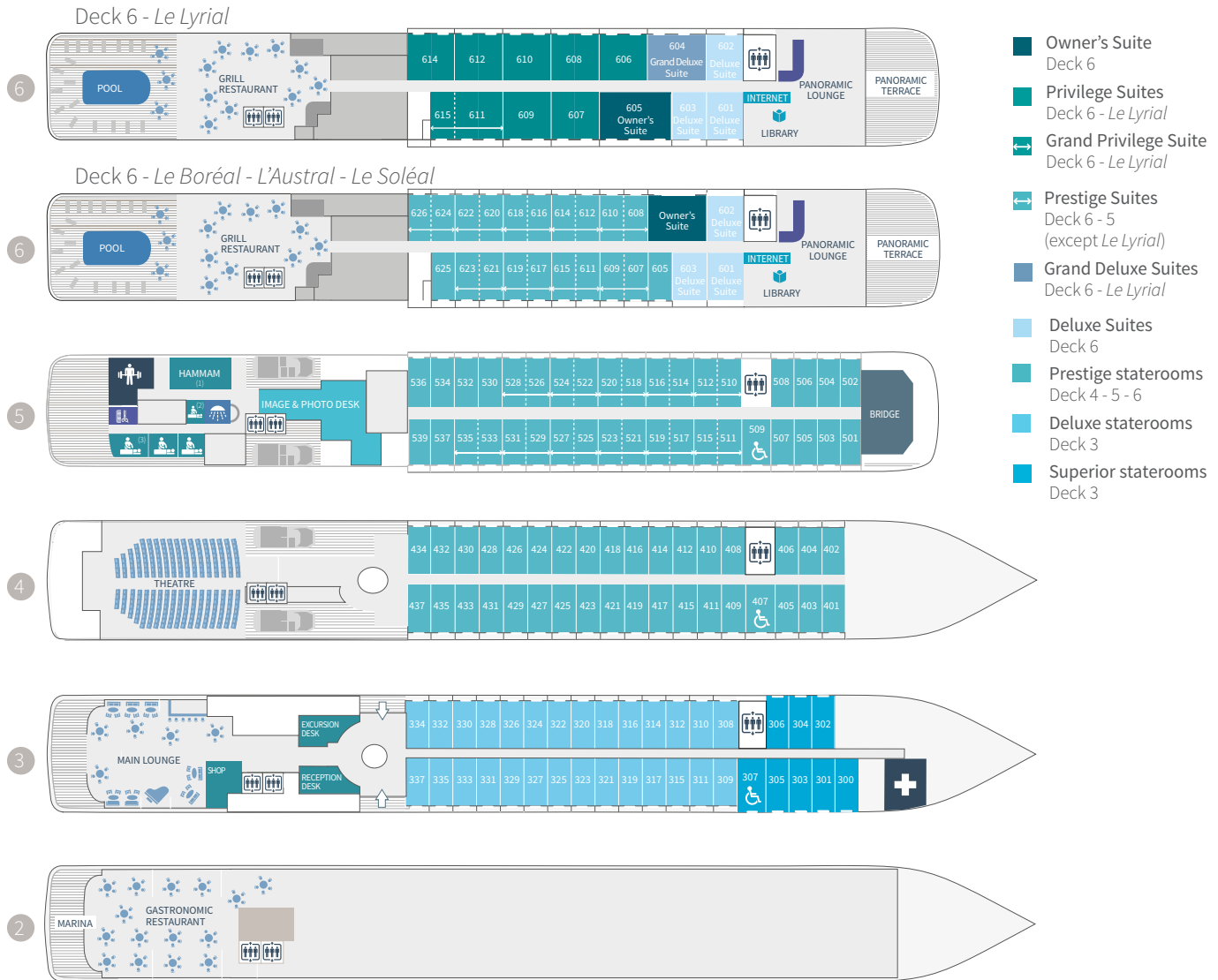
- Capacity: 250
- Main show room for conferences and live entertainment on select evenings
- State-of-the-art audio and video technology

Leisure Area

- Wii™ area, photo shop where images and videos of the cruise will be available for viewing and purchase



Deck Plans



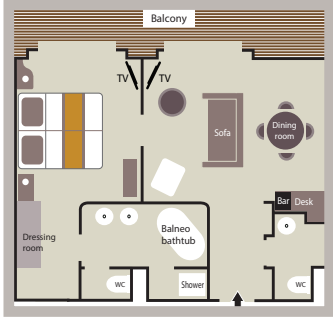
- 2 Gastronomic Restaurant - Marina
- 3 28 Deluxe staterooms with private balcony - 8 Superior staterooms (cabins 300 & 301 have a porthole) - Main Lounge - Shop - Reception desk - Excursion desk - Medical center
- 4 35 Prestige staterooms with private balcony - Theater
- 5 37 Prestige staterooms with private balcony (with 22 Prestige staterooms convertible into 11 Prestige suites) - Fitness - Sothys™ Beauty Corner: Balneo, Hammam, Massage, Hairdresser - Relaxation room - Image & photo desk - Bridge
- 6 *Le Boréal, L'Austral, Le Soléal*: Owner's Suite - 3 Deluxe Suites with private balcony - 20 Prestige staterooms with private balcony (with 18 Prestige staterooms convertible into 9 Prestige suites) - *Le Lyréal*: Owner's Suite - 1 Grand Privilege Suite - 3 Deluxe Suites with private balcony - 1 Grand Deluxe Suite - 8 Privilege Suites - 1 Prestige stateroom - Pool - Grill Restaurant - Internet space - Library - Panoramic lounge - Panoramic terrace

Stateroom Amenities

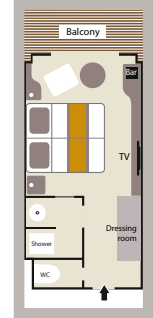
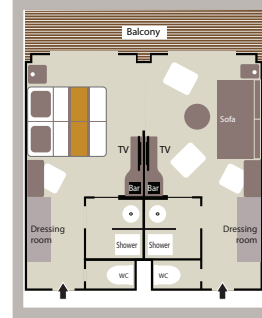
- Individually-controlled air-conditioning
- Cabin layout: king-size bed or twin beds
- Mini bar
- Flat screen satellite TV
- Bose™ speaker
- Desk with stationery
- Safe
- Selection of Diptyque bath products
- Dressing table, bathrobes, hairdryer
- Direct line telephone
- Outlets: 110V American (two flat pins) /220V European (round sockets with two round pins)
- 24hr room service
- WiFi Internet access

L'Austral, Le Boréal & Le Soléal Accommodations

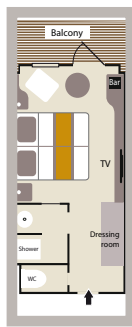
OWNER'S SUITE (484 sq.ft. + 97 sq.ft. private balcony)



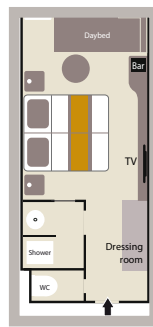
UP TO 20 PRESTIGE SUITES (398 sq.ft. + 86 sq.ft. private balcony)
UP TO 92 PRESTIGE STATEROOMS (200 sq.ft. + 43 sq.ft. private balcony)



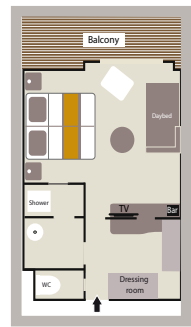
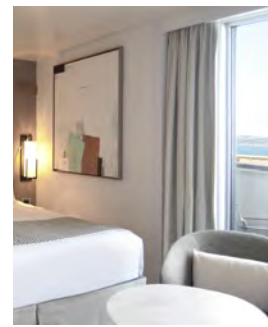
28 DELUXE STATEROOMS
 (200 sq.ft. + 43 sq.ft. private balcony)



8 SUPERIOR STATEROOMS
 (226 sq.ft.)

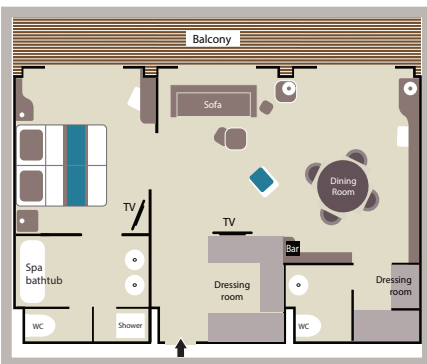


3 DELUXE SUITES
 (290 sq.ft. + 54 sq.ft. private balcony)

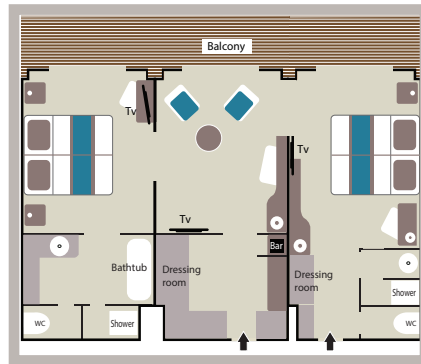


Le Lyrial Accommodations

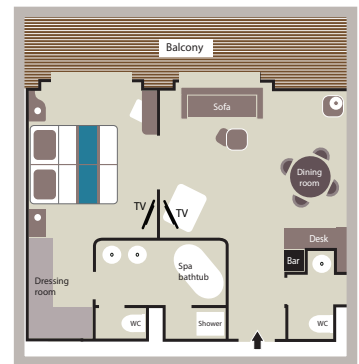
OWNER'S SUITE
 (581 sq.ft. + 129 sq.ft. private balcony)



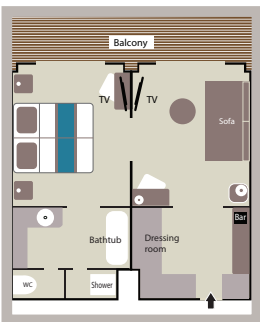
GRAND PRIVILEGE SUITE
 (581 sq.ft. + 129 sq.ft. private balcony)



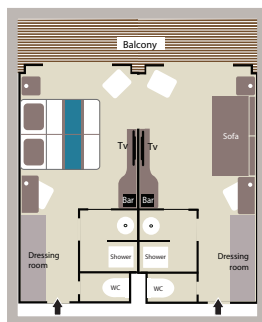
GRAND DELUXE SUITE
 (484 sq.ft. + 108 sq.ft. private balcony)



8 PRIVILEGE SUITES
 (388 sq.ft. + 86 sq.ft. private balcony)



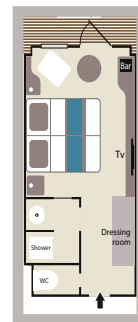
11 PRESTIGE SUITES (388 sq.ft. + 86 sq.ft. private balcony)
73 PRESTIGE STATEROOMS (194 sq.ft. + 43 sq.ft. private balcony)



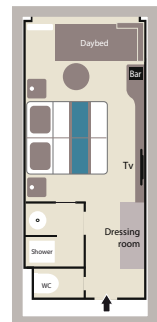
3 DELUXE SUITES
 (291 sq.ft. + 65 sq.ft. private balcony)



28 DELUXE STATEROOMS
 (194 sq.ft. + 43 sq.ft. private balcony)



8 SUPERIOR STATEROOMS
 (226 sq.ft.)





Amenities on board

Reception

- Open 24 hours a day

Guest Relations Desk

- Ask questions and receive information on PONANT and our voyages
- Book additional PONANT departures through the Travel Ambassador

Excursions Desk

- Review excursion options and make changes (if available)

Butler Service

- Provided for our guests staying in Suites on Deck 6

Room Service

- Complimentary and available 24 hours a day

Wake-up Service

- A wake-up service is available, instructions are provided on board for guests

Laundry Service

- Price lists, laundry bags, and a laundry list can be found in each cabin
- 24–48 hours are required for the washing and ironing of clothing (dry cleaning is not available)

Stateroom Gifts

- In-stateroom gifts, including wine, pastries, and fruit can be arranged prior to boarding.

Gym

- Open 24 hours a day
- A gentle gym class is occasionally offered in the mornings

Photography/Video Service

- A photographer and film maker are present on board to capture every moment of the cruise
- A “Best-Of” CD of photos and a DVD are available for sale at the end of the cruise

Daily Program

- Published daily and delivered each evening to all cabins
- Contains the schedule for the next day’s activities and information on the port of call

Bar

- Beer
- Cocktails
- Fruit juices, water, sodas, and tonics
- Wines
- Spirits
- Mini bar in each cabin, refilled daily

Postal Service

- Post can be sent from on board the ship by leaving it at reception (*the cost of the stamps will be added to the cabin account*)
- Stationary is provided in each cabin

Life On Board



STATEROOM AMENITIES

Each stateroom is equipped with a Nespresso machine, mini bar/mini fridge, safe, bathrobe, slippers, PONANT water bottle, Covid-19 kit, sparkling and still water, and vanity kit in the main space. Each cabin bathroom includes a hairdryer, manicure kit, shampoo, conditioner, body wash, lotion, and shower cap. Space is available under the bed in your stateroom for multiple pieces of checked-bag sized luggage, in the closet, and in various drawers and shelves, depending on the size of the luggage.

SHIP KEY CARD

One key card will be given to each passenger upon embarkation. It is used to open your cabin, disembark and board the ship, and make purchases onboard. We kindly ask that you keep this card on you at all times.

ELECTRICAL POWER & OUTLETS

The electricity on board is 220 volt AC (European standard), with 110 volt AC (North American standard) in stateroom bathrooms. We recommend guests bring an adapter and a converter, though a limited

number of adapters can be provided through the ship on a first-come, first serve basis and are available at Reception on our ships. For safety reasons, the use of personal irons and hair irons is not allowed.

LOUNGES

Enjoy refreshments, cocktails, and conversation in one of the inviting lounges: Panoramic Lounge, Main Lounge, Open-air Lounge.

THEATER

The perfect venue for presentations, lectures, and performances with state-of-the-art audio / visual technology and comfortable theater seating.

LIBRARY

The library area is a cozy spot for some quiet time with a book or magazine. It has an extensive selection to suit everyone's taste.

BOUTIQUE

The onboard signature shop, La Boutique, offers a range of clothing, souvenirs, gifts, jewelry, and toiletries. It is located on Deck 3 and is closed on Sundays and when the ship is docked in port.

DINING

Dining in any of our culinary venues on board our luxury yachts is an exquisite experience for the discriminating palate. In 2016, PONANT joined forces with Ducasse Conseil, a catering center of excellence run by Alain Ducasse Entrepise. From the conception of culinary offerings to the training of all the company's Chefs, this long-term project aims to ensure that PONANT's culinary standards are the highest possible and satisfy the exacting requirements of our international guests. Each of our restaurants has an open-seating policy to cater to guests' individual schedule on board. Our French chefs combine traditional gourmet cuisine with local specialties of the various ports we visit. Dine on fine cuisine in formal or casual restaurants (including al fresco options), with varying seating capacities, an array of seating options, and customizable menus.

DINING HOURS

Breakfast is available in Marina, our formal dining room, on Deck 2 from approximately 7:00 am – 9:00 am. Coffee and pastries are available in the Main Lounge from approximately 6:30 am – 10:00 am. Lunch is served in both our Grill Restaurant on Deck 6 and Marina on Deck 2, from 12:00 pm – 2:00 pm, while dinner is served in both restaurants from approximately 7:00 pm – 9:00 pm.

PRIVATE GROUP DINING

According to your group, function, or event needs, we can accommodate special occasions in our various restaurant venues on board, subject to availability and prior confirmation; these arrangements can be made once on board. Our chef is also able to accommodate special dietary needs and to enhance guests' dining experience with a customized menu.

INCLUSIVE BEVERAGE PACKAGE

PONANT voyages include a broad selection of fine wine, champagne, beer, and liquor served throughout the cruise. Soft drinks, mineral water, and juice are also available. Beer, soft drinks, juice, tonic water and mineral water are available in each cabin's mini bar. There is an additional charge for premium wines and liquors. PONANT enjoys an exclusive partnership with the French champagne house Henriot and is proud to serve the renowned label's spirits aboard all yachts. *Alcohol service may be restricted in some countries.*

LAUNDRY

Laundry service is available on board all our ships for a fee. Price lists and laundry bags can be found in each cabin. Washing and ironing of clothing takes 24 to 48 hours. Dry cleaning and self-service laundry is not available.

PHOTOGRAPHY / VIDEO SERVICE

Photos and videos taken by our onboard team are available for viewing on Deck 5 in the Art/Photo/Video gallery. If you would like to purchase a photo or video, this must be done prior to disembarkation day, as photos and videos are not available after the cruise ends.

POSTAL SERVICE

If you use this included service, please note that there may be delays in delivery to your intended recipient. Anything time sensitive should not be mailed.

ZODIAC FLEET

The ships are equipped with a fleet of Zodiac boats which comfortably transport guests to shore and allow for exceptional discoveries of wildlife and the surrounding coastal landscapes. This is an absolute must for exploratory excursions along coastlines or for accessing shallow water ports. Zodiacs are safe, nimble, stable, durable, and easy to board. Our highly-trained crew operates and maintains them. Zodiac launches are conducted from the stern via our marine platform, which is more stable than launching from the sides of the ship.

CHILDREN'S PROGRAM

The Sisterships offer a children's area on Deck 5 with games and books. Information on the Kid Explorer's Club can be found under the Activities tab on the main trip webpage. Children ages 4 - 13 are welcome to participate in the Kid's Club at no additional cost.

LANGUAGE

All announcements, signage, and communications are in English and French. All staff and crew speak both English and French.

PAYMENT ON BOARD

An account is opened at Reception for each stateroom. (It is possible to have separate accounts for each guest.) We ask guests to leave an imprint of their credit card at Reception. Any onboard spending (boutique, spa, laundry, excursions, etc.) is added to the account. A

detailed invoice and credit card receipt are placed in the stateroom the night before guests disembark the ship. Onboard accounts are closed for billing on the final night of each cruise. From 10:00 pm that evening, all payments must be made in cash. The currency used on board is the Euro, but the US dollar is also accepted. Approved payment methods include: credit card (Visa, American Express, MasterCard); cash; and travelers' checks. It is not possible to exchange currency on board our ships. We advise you to exchange currency either through your bank or at the airport upon arrival. You can also use an ATM when we arrive in port, depending on location.

COMPLIMENTARY WIFI

WiFi access is available throughout the ship, in staterooms and public areas. Please note: There will be times when the ship will be out of satellite range. When there is satellite signal available, the bandwidth will be relatively narrow and speed will be correspondingly slow. It is not the fast internet you have likely become accustomed to at work and at home. You will be able to send and receive email messages and check your personal email accounts without difficulty, but we do not recommend 'surfing' the web, downloading files of any significant size, or attempting to stream audio or video.

TELEPHONE

A satellite communication system is available for guests to use at the rate of €6/minute.

GRATUITIES

Gratuities are included in your cruise fare. Additional tips to staff, crew, and spa therapists are at the discretion of the guest.

DRONES

The use of drones while on board PONANT ships is strictly forbidden, whether sailing at sea, at a port of call, or anchored.

HEALTH / MEDICAL

The ship's infirmary is available 24 hours a day and is equipped to treat non-emergency matters. A doctor is available on board every ship, and accompanies guests on off-ship excursions. There is a fee for consultations and medical procedures carried out on board. These are not covered by health insurance plans or Social Security. Please note, onboard physicians cannot fill prescriptions; please be sure to bring all necessary medications with you.

ACCESSIBILITY

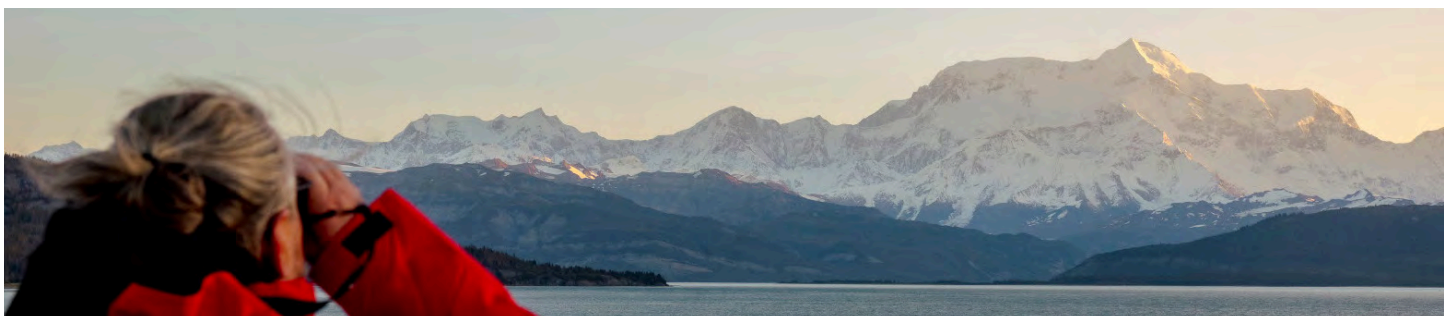
PONANT Sisterships are fully ADA compliant, with accessible staterooms, elevators, and lifts for stairs for easy access to all decks and public areas.

SMOKING / NON-SMOKING

All enclosed areas (lounge areas, dining room, staterooms, reception area, etc.) are non-smoking. Smoking is not permitted on balconies. Smoking is allowed in the ship's designated outdoor areas.

LIFEBOAT DRILL

A lifeboat drill will be conducted before the ship leaves the embarkation port. A life jacket to use during the drill can be found in your cabin closet. You will be shown how to use your life jacket during the drill. It is mandatory that all travelers participate in the lifeboat drill.



Spa and fitness



A journey at sea is the ideal time to indulge oneself with an array of spa and fitness services that will relax and rejuvenate the body, mind, and spirit. Guests can enjoy a soothing massage, swim in the outdoor pool, or soak in the warmth of the sun on the open deck space with views out to sea—all a wonderful complement to a day of activity spent in lectures or on excursions ashore.

PONANT's spa offers a range of luxurious services featuring products by Sothys, the leading French beauty and skincare line. Expert beauticians and massage therapists pamper guests with personalized facial and body treatments suited to their unique, individual needs. Choose from massages, facials, body scrubs, anti-aging treatments, and other options. Spa appointments cannot be made in advance; they can only be made once on board.

OUR FITNESS AND BEAUTY FACILITIES INCLUDE:

- Two treatment rooms
- One mixed treatment room for balneotherapy and massage (*Balneotherapy only available on board L'Austral and Le Boréal*)
- Hammam
- Hairdresser
- Herbal tea bar
- Semi-private outdoor relaxation area
- A fitness space with a panoramic sea view, outfitted with a Kinesis wall, treadmills, stationary bikes, and other equipment
- Outdoor swimming pool and sun deck